

How to Update your Kestrel Firmware using LiNK for MAC/OSX

NOTE: You will need either our [Bluetooth Dongle](#) or the [USB Transfer Cable](#) to perform this update. If you do not have either of these, consider using the Kestrel LiNK or Kestrel LiNK Ballistics mobile applications.

For the latest firmware revisions, please see [here](#)


Step 1: Download and install the latest Kestrel LiNK for MAC/OSX program found here:
<https://kestrelinstruments.com/mwdownloads/download/link/id/64/>

Step 2: Insert the Bluetooth dongle or USB Transfer cable into the computer. Connect the cable to the Kestrel.

On the Kestrel Main Menu:

If using Bluetooth

Bluetooth...	On	Conct	PC/Mobile
Data Port	Off	Status	Available
Memory Options...		Privacy Pin	Off
		PIN	1234



Make sure Bluetooth is ON. Highlight Bluetooth and press the center button. Make sure Conct is set to PC/Mobile and Privacy Pin is OFF.

Use the left or right arrow to change these values if not set correctly.

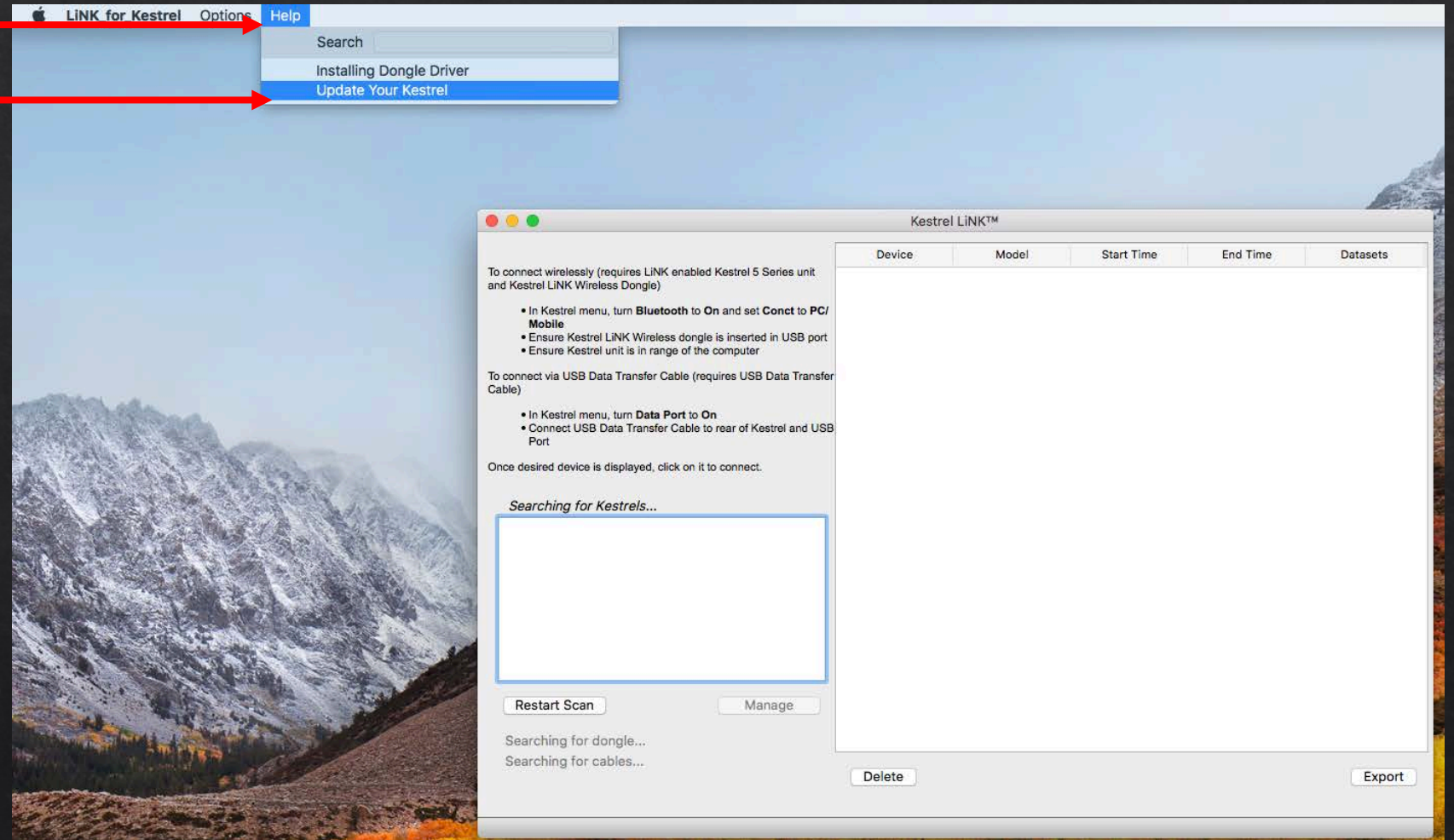
If using USB Cable

Bluetooth...	Off
Data Port	On
Memory Options...	

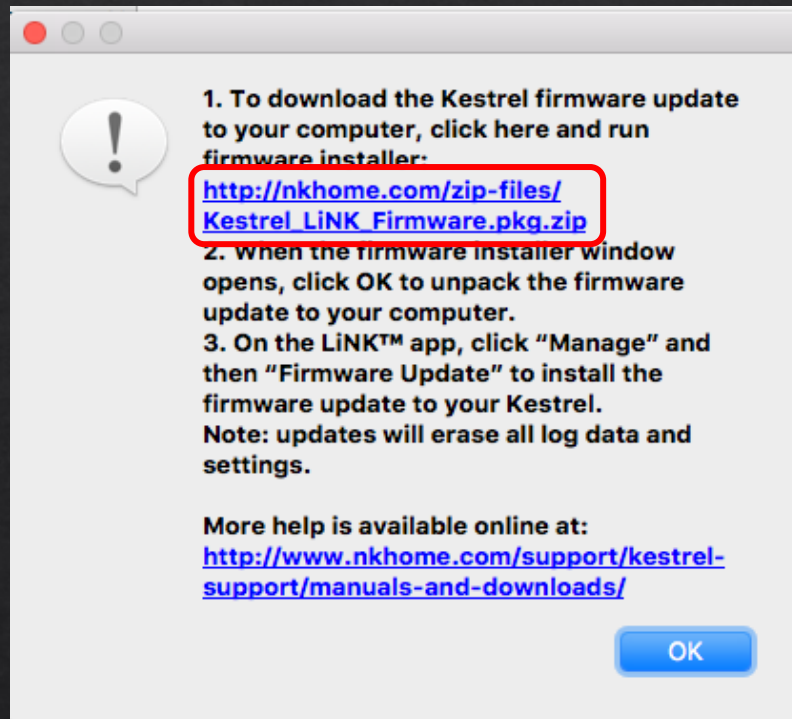
Make sure Data Port is set to On

Step 3: Open the Kestrel LiNK for MAC/OSX Program

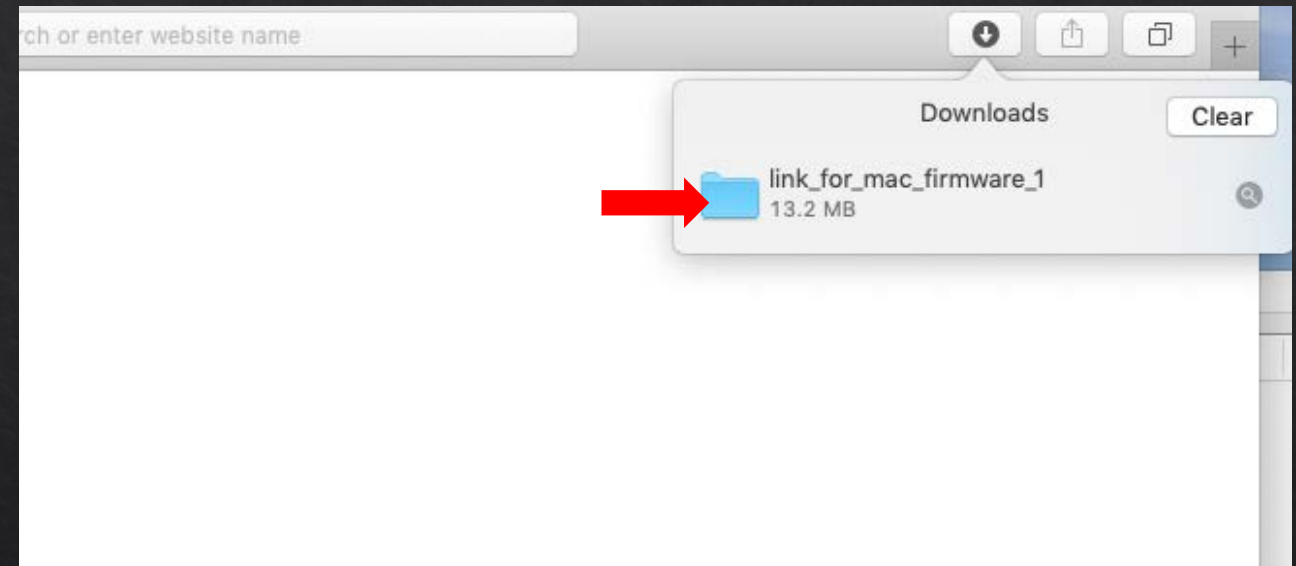
Step 4: You have to make sure your computer has the latest firmware. Click on the Help tab at the top followed by Update Your Kestrel.

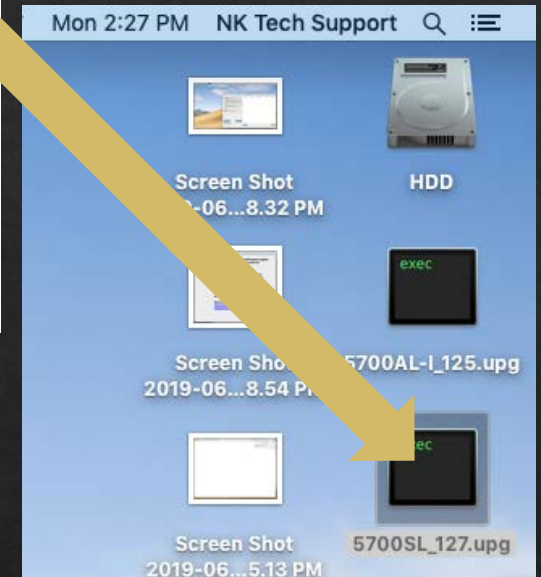
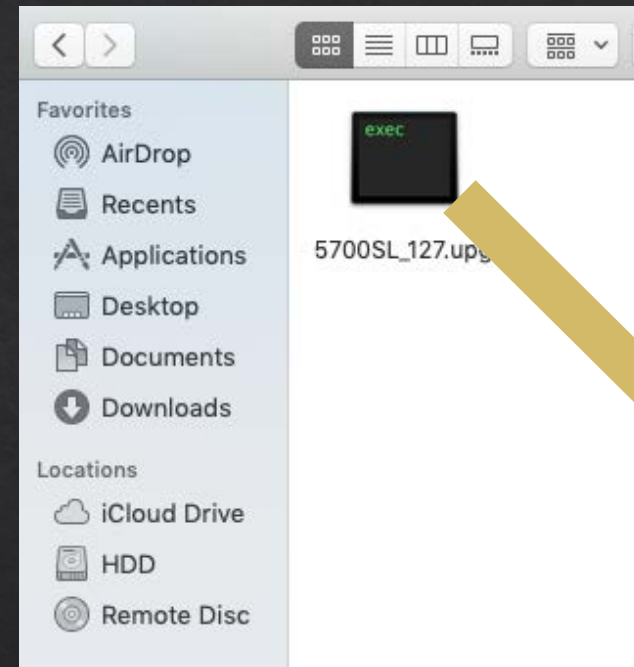
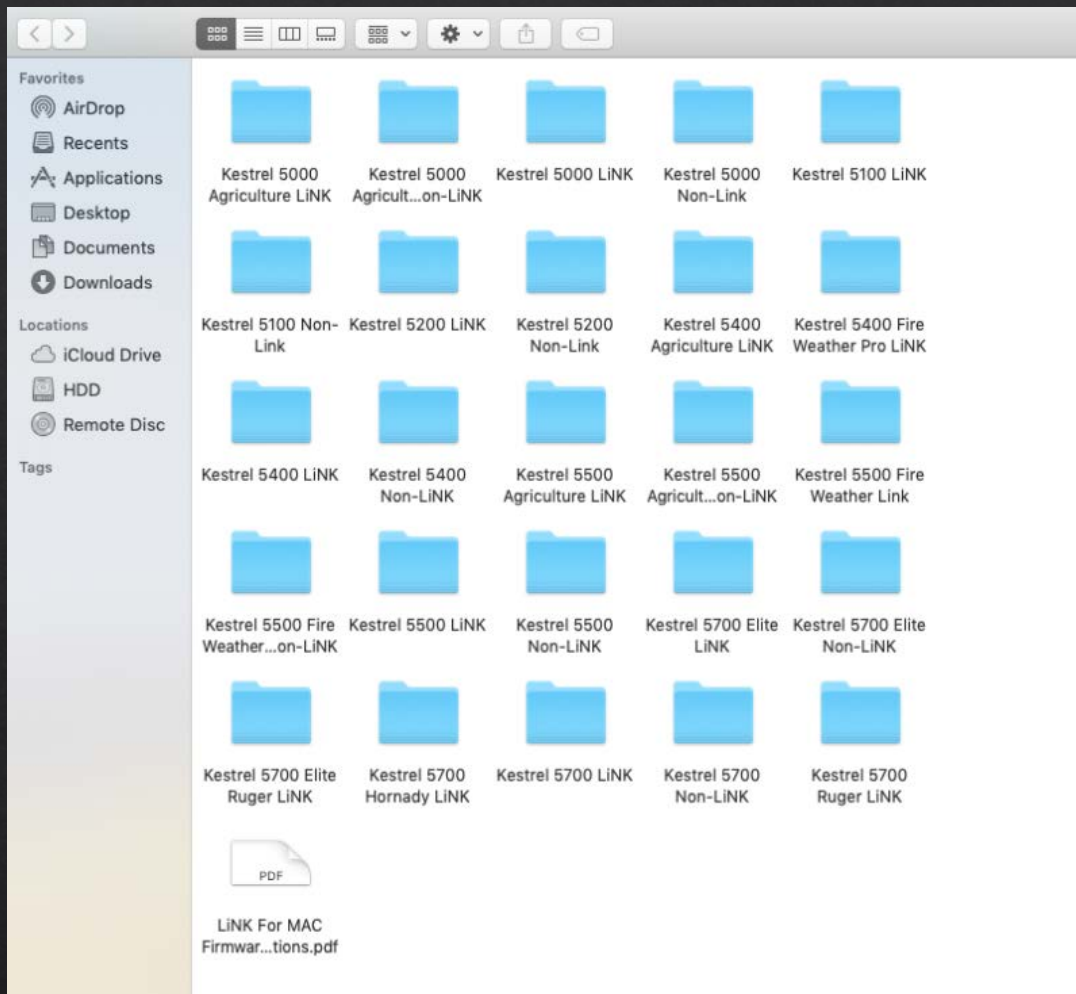


Step 5: Click on the link in Step one to download the ZIP file. Once downloaded, click on it to open the file.



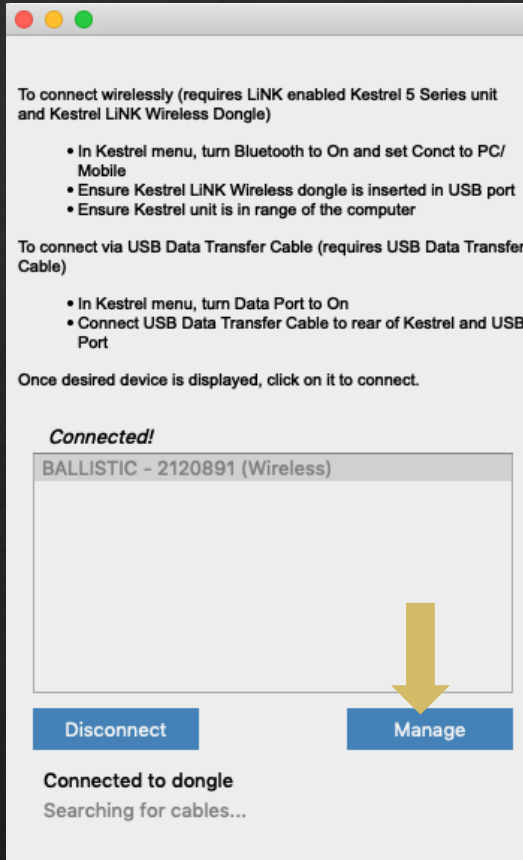
Step 6: Safari will open and you will need to click on the downloads section in the web browser. Click on the file after it downloads.



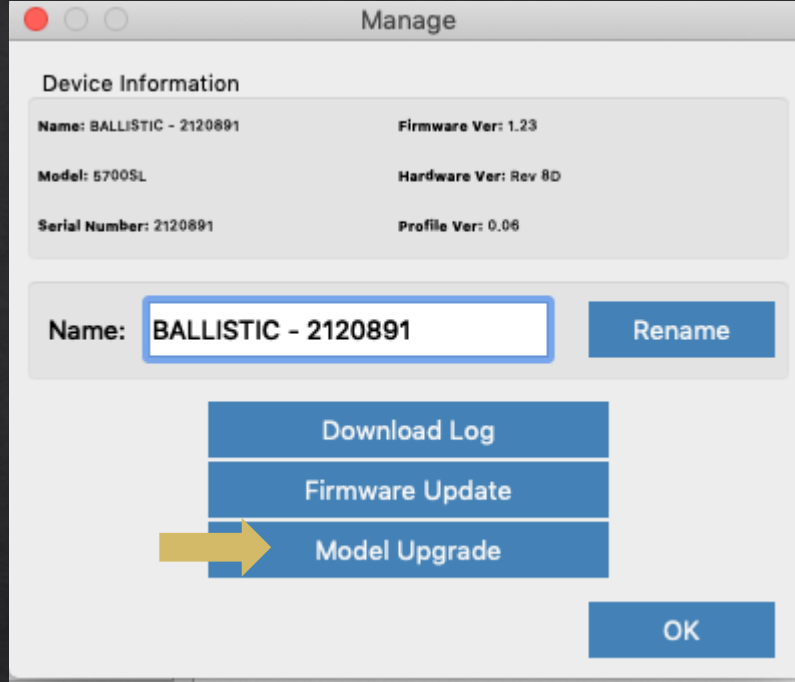


Step 7: In the various folders are the different models of Kestrel. Select the folder of your model. **Note: You can check model in the Kestrel under About->Version->Model**

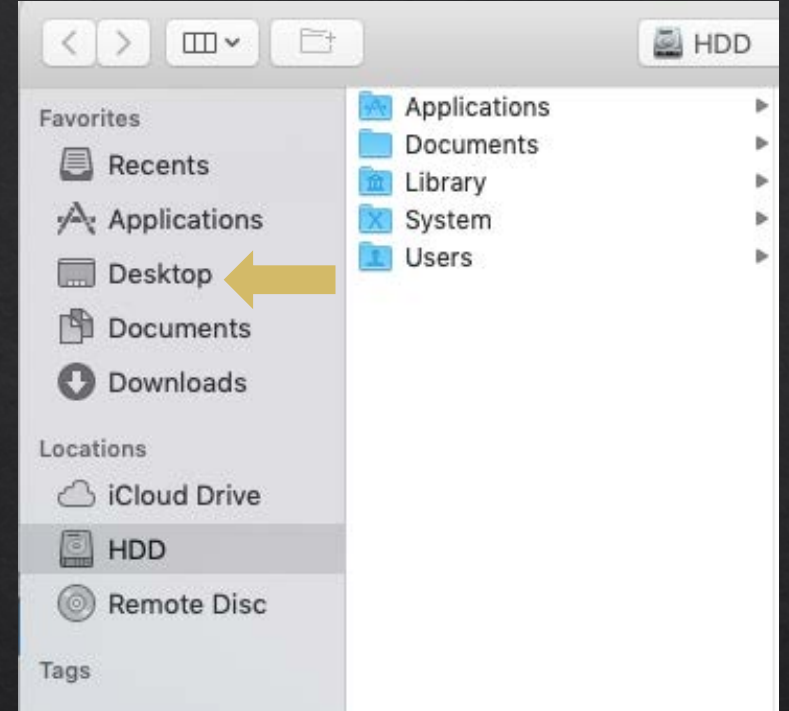
Step 8: Drag and drop this firmware file to your Desktop.



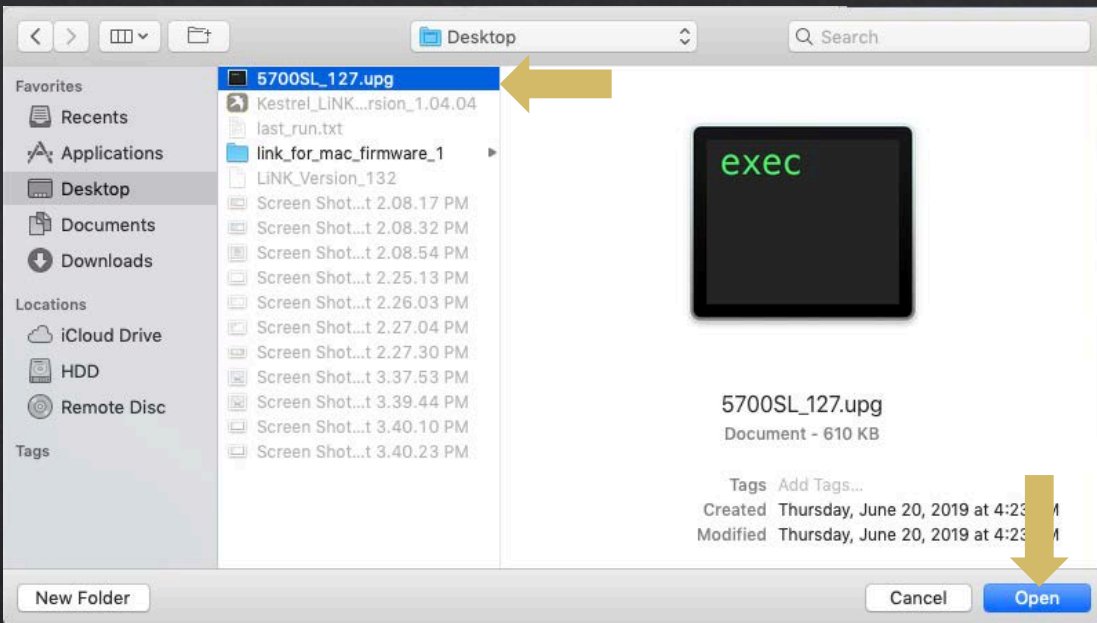
Step 9: Next connect your Kestrel to the Kestrel LiNK program. Select the *Manage* tab.



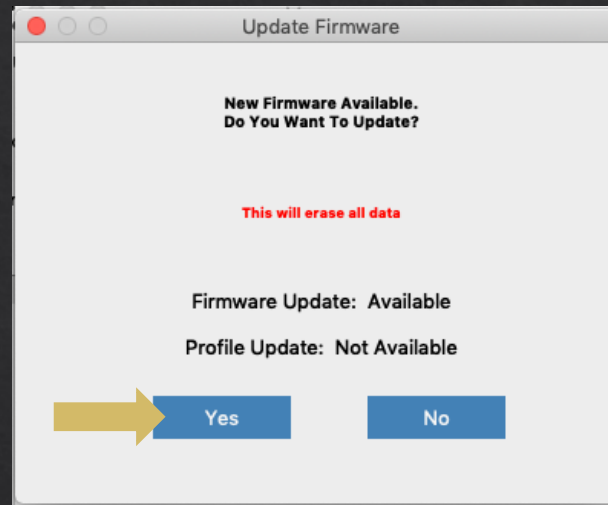
Step 10: On the Manage tab, select *Model Upgrade*.



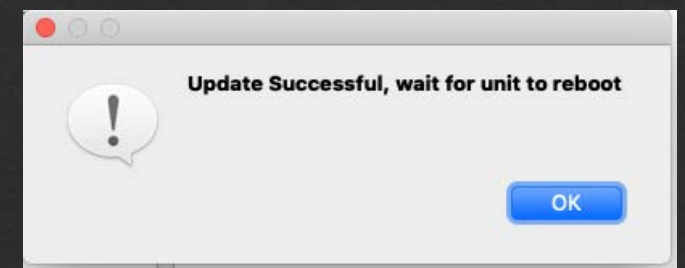
Step 11: A Finder window will appear, you now need to navigate to the Desktop.



Step 12: On the Desktop, select the file that was downloaded. Then select Open at the bottom of the window.

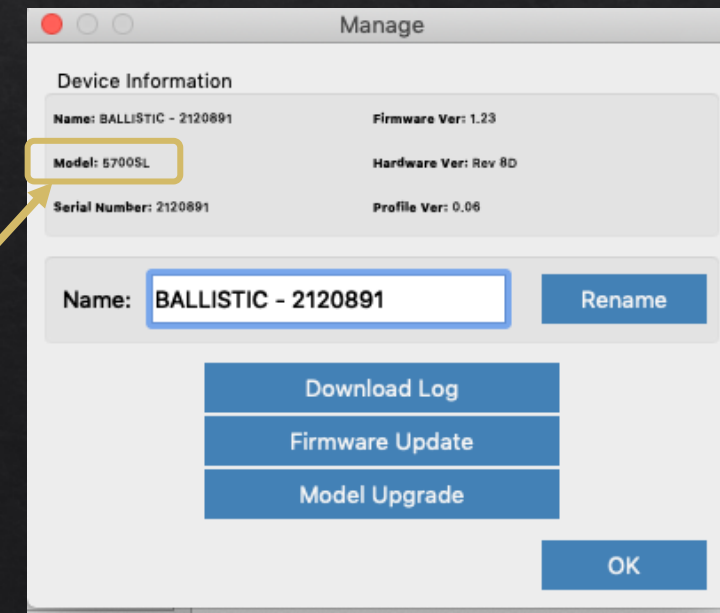


Step 13: You will be prompted for a new update. Select Yes to start the update.



Step 14: Wait for the Kestrel to reboot and once it does, the update is finished.

Note: If you are not prompted for an update, you may have the wrong firmware file. You can check the model on the Manage tab. Make sure the file name matches this Model number.



Troubleshooting

If your computer isn't recognizing the Bluetooth dongle, try another USB slot. If it is still not recognizing the dongle, then disconnect all peripherals from computer and turn off. Wait 5 minutes and then turn it back on and connect the peripherals again.

If your USB Cable isn't working correctly, make sure the cable is plugged into the computer and into the Kestrel PRIOR to opening the Kestrel LiNK program.

If you are still having issues, we can answer them at techsupport@nkhome.com