

How to Update your Kestrel 5000 Series Firmware using MAC/OSX

- ▣ Requirements
 - NK [Bluetooth Dongle](#)* (if LiNK compatible) (or)
 - NK [USB Data Transfer Cable](#) (and)
 - [Kestrel LiNK for MAC Program](#)
 - Kestrel 5000 Series unit
 - MAC computer**

Ballistic users SHOULD save their guns prior to performing this update as they may be erased.

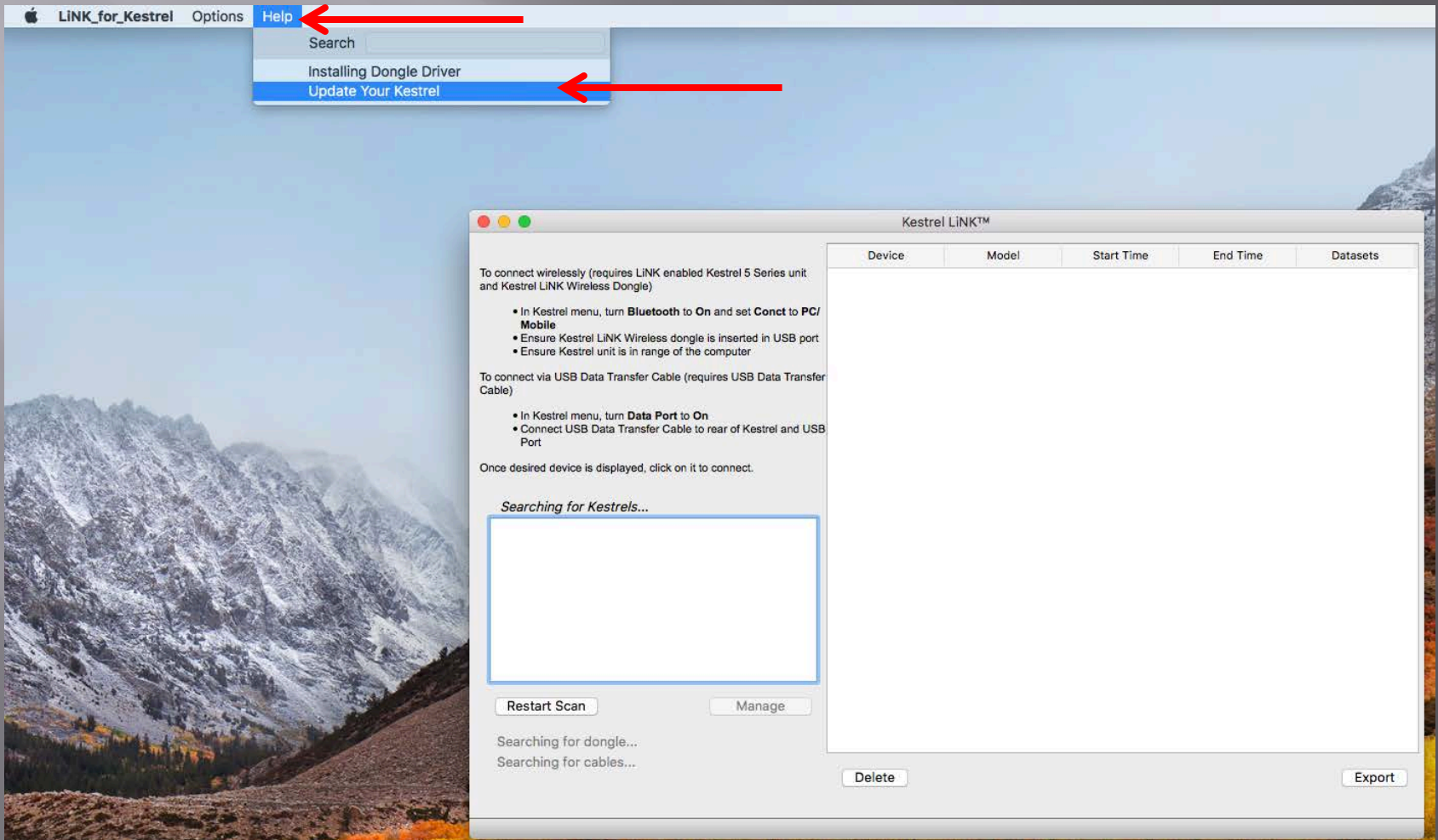


*You cannot use the same Bluetooth dongle that was used with 4000 series.

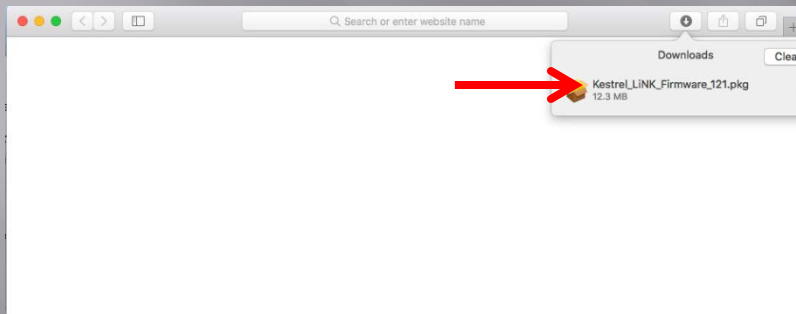
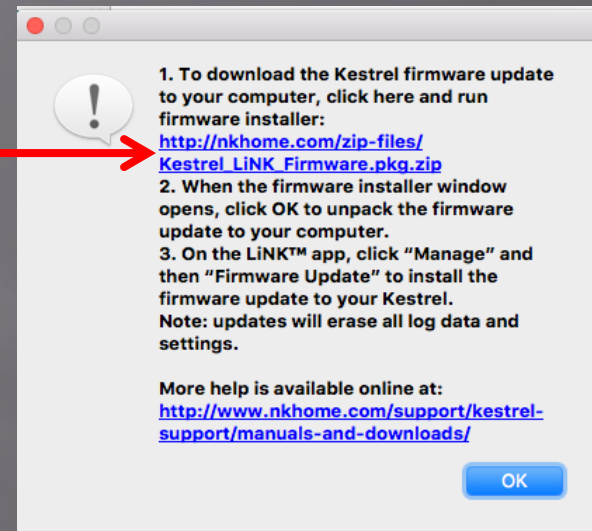
** This process is only for LiNK for MAC/OSX. For LiNK for Android or LiNK for iOS, the process is automated when you open the application.

1) After downloading and installing LiNK for MAC, open the application.

2) First you will need to download the latest firmware to your computer. To do this, click on the Help Tab and open up *Update Your Kestrel*. This will be found at the very top of the monitor screen.

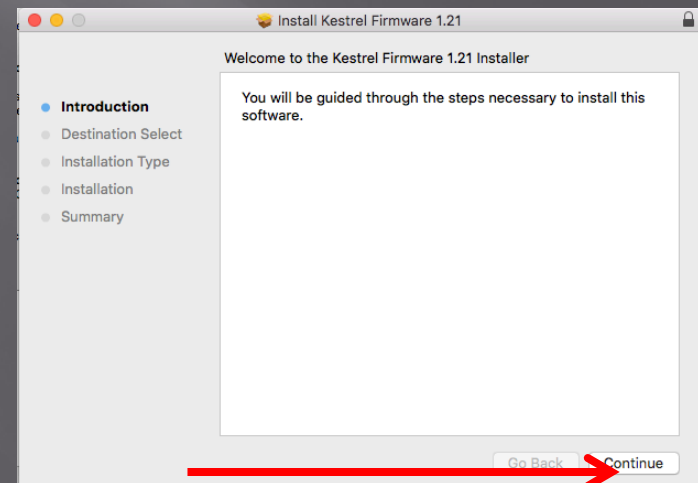


3) Click on the link in Step 1

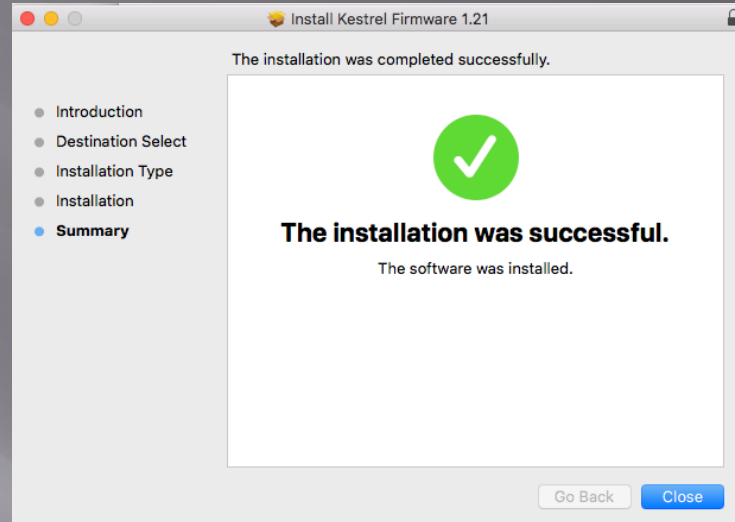


4) Once the file is downloaded, double click on it to open and run.

5) When the program begins the install process, click continue until the install is completed.



6) Follow the prompts to install the latest firmware onto your computer.



7) Next we will need to connect the Kestrel to the LiNK for MAC/OSX Application.

If you are using Bluetooth (i.e., LiNK Enabled):

On the Kestrel

- Turn Bluetooth to **ON**

- Press center button on Bluetooth and Set

Conct to **PC/MOBILE**. **Turn Privacy Pin off.**

On the computer

- Insert Bluetooth dongle.

On the application

- It should say "Connected to Dongle". If it still says "Searching for Dongle" please reinsert into a different USB port. If still having issues, disconnect all peripherals from computer, turn off computer for 5 minutes and then reboot and reconnect peripherals.

If you are using USB Transfer Cable:

On the Kestrel

- Turn Data Port to **ON**.

- Plug USB cable into back of Kestrel

On the computer

- Plug USB end of cable into computer.

On the application

- It should say “Connected to Cable” (as shown below)

Please Note: The computer may take some time to install the driver the first time that the USB Data Cable or Bluetooth Dongle is inserted into the computer. Please allow some time for setup to occur. You may have to close and reopen the program after the driver is installed.

The screenshot shows the Kestrel LiNK™ application window. The interface includes a menu bar with 'About' and 'Help'. The main content area is divided into two sections: wireless connection instructions and USB connection instructions. The USB section shows a 'Connected!' status with a list of devices, including 'WEATHER - 2116310 (USB Cable)'. Below this list are 'Disconnect' and 'Manage' buttons. A red arrow points to the 'Connected to cable' status text. To the right, a table displays a list of devices with columns for Device, Model, Start Time, End Time, and Datasets. At the bottom of the window are 'Delete' and 'Export' buttons.

Device	Model	Start Time	End Time	Datasets
NK Demo	5700SL	2015-11-18 13:26:00	2015-11-18 16:02:50	1367
NK Demo	5700SL	2015-11-18 13:26:00	2015-11-18 16:08:48	1546
WEATHER - 2110154	5500L	2015-11-20 11:34:00	2015-11-20 16:19:00	286
WEATHER - 2110154	5500L	2015-11-20 11:34:00	2015-11-20 16:19:00	286
Racosky's Unit	5700SL	2015-12-02 16:25:00	2015-12-03 14:13:00	1309
WEATHER - 2108492	5500	2015-12-02 16:25:00	2015-12-03 14:13:00	1309
WEATHER - 2108492	5500	2016-01-04 16:23:40	2016-01-04 17:08:40	271
WEATHER - 2108492	5500	2016-01-04 16:23:40	2016-01-04 17:08:40	271
WEATHER - 2108492	5500	2016-01-04 16:23:40	2016-01-04 17:08:40	271
WEATHER - 2116312	5500	2015-01-12 16:54:00	2015-01-13 15:03:00	1330
WEATHER - 2116310	5500	2015-01-12 16:54:00	2015-01-13 15:03:00	1330
WEATHER - 2116308	5500	2015-01-12 04:54:00	2015-01-13 03:41:00	1344

8) Select your Kestrel when it appears in the application.

9) Select the Manage Tab.

10) Select Firmware Update.

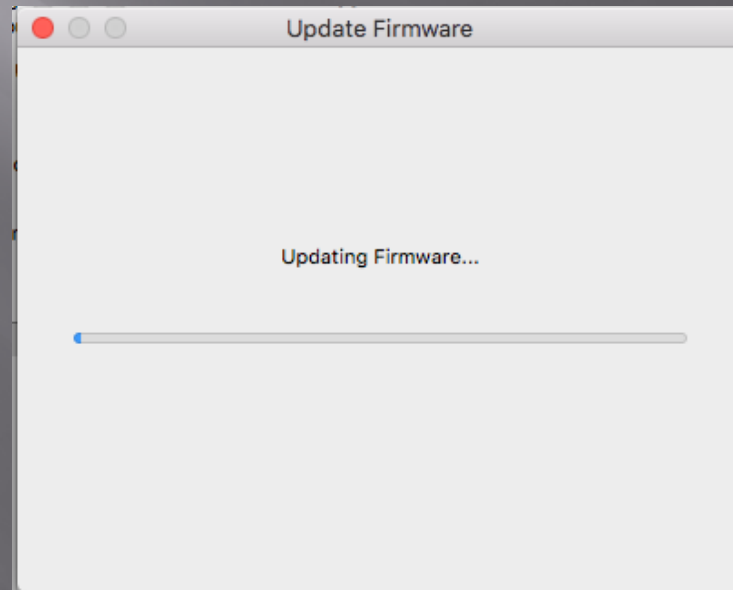
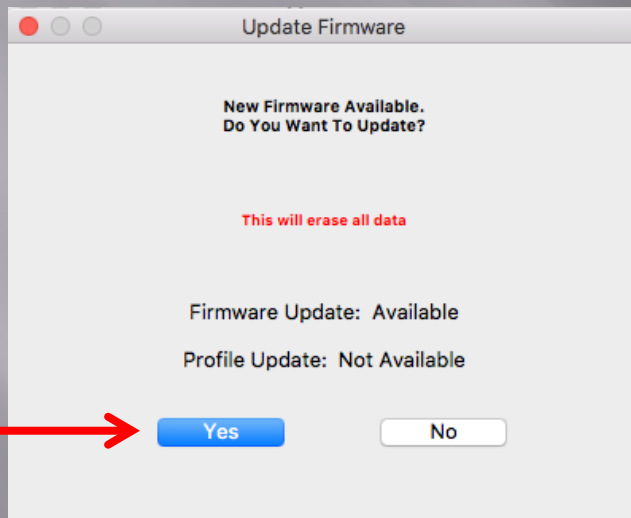
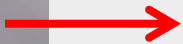
The screenshot displays the Kestrel LiNK software interface. On the left, there are instructions for connecting wirelessly and via USB. The main area shows a table of connected devices. A red arrow labeled '8' points to the device 'WEATHER - 2116310 (USB Cable)' in the list. Another red arrow labeled '9' points to the 'Manage' button at the bottom of the device list. To the right, a 'Manage' dialog box is open, showing device information and options: 'Name: AB - 2304012', 'Firmware Ver: 1.15', 'Model: 5700AL', 'Hardware Ver: Rev 11B', 'Serial Number: 2304012', and 'Profile Ver: 0.06'. The 'Firmware Update' button is highlighted with a red arrow.

Device	Model	Start Time	End Time	Datasets
NK Demo	5700SL	2015-11-18 13:26:00	2015-11-18 16:02:50	1367
NK Demo	5700SL	2015-11-18 13:26:00	2015-11-18 16:08:48	1546
WEATHER - 2110154	5500L	2015-11-20 11:34:00	2015-11-20 16:19:00	286
WEATHER - 2110154	5500L	2015-11-20 11:34:00	2015-11-20 16:19:00	286
Racosky's Unit	5700SL	2015-12-02 16:25:00	2015-12-03 14:13:00	1309
WEATHER - 2108492	5500	2015-12-02 16:25:00	2015-12-03 14:13:00	1309
WEATHER - 2108492	5500	2016-01-04 16:23:40	2016-01-04 17:08:40	271
WEATHER - 2108492	5500	2016-01-04 16:23:40	2016-01-04 17:08:40	271
WEATHER - 2108492	5500	2016-01-04 16:23:40	2016-01-04 17:08:40	271
WEATHER - 2116312	5500	2015-01-12 16:54:00	2015-01-13 15:03:00	1330
WEATHER - 2116310	5500	2015-01-12 16:54:00	2015-01-13 15:03:00	1330
WEATHER - 2116308	5500	2015-01-12 04:54:00	2015-01-13 02:41:00	1344

11) You will now be prompted if the latest firmware is not currently on your device. Please select Yes to update the firmware (it will erase your data on the device).

12) Please wait for the Kestrel to reboot after the progress bars are completed. Once the Kestrel reboots, the new firmware will be on your device.

11



12

